



ZNF75 Polyclonal Antibody

Catalog No	YP-Ab-02202
Isotype	IgG
Reactivity	Human;Rat;Mouse;
Applications	WB;IHC;IF;ELISA
Gene Name	ZNF75D
Protein Name	Zinc finger protein 75D
Immunogen	The antiserum was produced against synthesized peptide derived from human ZNF75. AA range:296-345
Specificity	ZNF75 Polyclonal Antibody detects endogenous levels of ZNF75 protein.
Formulation	Liquid in PBS containing 50% glycerol, 0.5% BSA and 0.02% sodium azide.
Source	Polyclonal, Rabbit,IgG
Purification	The antibody was affinity-purified from rabbit antiserum by affinity-chromatography using epitope-specific immunogen.
Dilution	WB: 1/500 - 1/2000. IHC: 1/100 - 1/300. ELISA: 1/10000.. IF 1:50-200
Concentration	1 mg/ml
Purity	≥90%
Storage Stability	-20°C/1 year
Synonyms	ZNF75D; ZNF75; ZNF82; Zinc finger protein 75D; Zinc finger protein 75; Zinc finger protein 82
Observed Band	40kD
Cell Pathway	Nucleus .
Tissue Specificity	Brain,Human skeletal muscle,Lung fibroblast,Lymph node,Thalamus,
Function	function:May be involved in transcriptional regulation.,similarity:Belongs to the krueppel C2H2-type zinc-finger protein family.,similarity:Contains 1 KRAB domain.,similarity:Contains 1 SCAN box domain.,similarity:Contains 5 C2H2-type zinc fingers.,
Background	zinc finger protein 75D(ZNF75D) Homo sapiens This gene encodes a protein that likely functions as a transcription factor. The protein, which belongs to the ZNF75 family, includes an N-terminal SCAN domain, a KRAB box, and five C2H2-type zinc finger motifs. Another functional gene belonging to this family is located on chromosome 16, while pseudogenes have been identified on chromosomes 11 and 12. Alternative splicing results in multiple transcripts variants. [provided by RefSeq, Jun 2010],



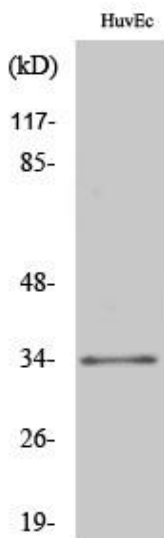
matters needing attention

Avoid repeated freezing and thawing!

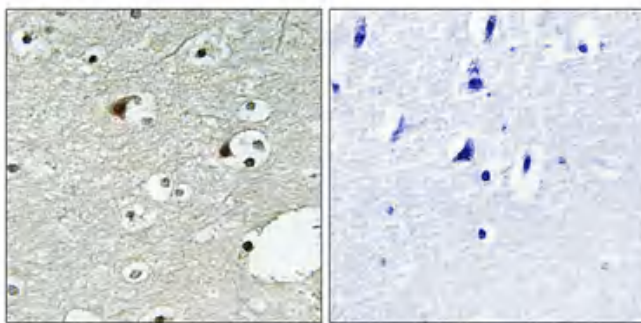
Usage suggestions

This product can be used in immunological reaction related experiments. For more information, please consult technical personnel.

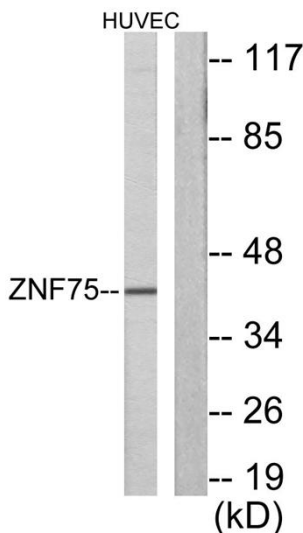
Products Images



Western Blot analysis of various cells using ZNF75 Polyclonal Antibody diluted at 1:500. Secondary antibody(catalog#:RS0002) was diluted at 1:20000



Immunohistochemical analysis of paraffin-embedded Human brain. Antibody was diluted at 1:100(4° overnight). High-pressure and temperature Tris-EDTA,pH8.0 was used for antigen retrieval. Negative contrl (right) obtained from antibody was pre-absorbed by immunogen peptide.



Western blot analysis of lysates from HUVEC cells, using ZNF75 Antibody. The lane on the right is blocked with the synthesized peptide.